

Short Report



Facade of DAS MINSK Kunsthause in Potsdam | © DAS MINSK Kunsthause in Potsdam, Foto: Ladislav Zajac

DAS MINSK Kunsthause in Potsdam

Max-Planck-Straße 17
14473 Potsdam

Tel: +49 331 236014-699

besucherservice@dasminsk.de
<https://dasminsk.de/>

Welcome!

The former terrace restaurant »Minsk«, built in the 1970s in the modernist style of the GDR, has become a place of encounter between modern and contemporary art—and between people. Artworks from the former GDR, which are part of the Hasso Plattner Collection, are shown here in new contexts.

TEST RESULT

for

DAS MINSK Kunsthaus in Potsdam

14473 Potsdam, Certificate-ID: PA-14306-2025



This offer was classified according to
the criteria of the nationwide label

»Tourism for All«

and, in the period from

May 2025 – April 2028

is entitled to use the label

»Accessibility checked«

and the associated pictograms
in accordance with the contract.



DAS MINSK Kunsthause in Potsdam

© DAS MINSK Kunsthause in
Potsdam, Foto: Ladislav Zajac



Facade of DAS MINSK Kunsthause in Potsdam

© DAS MINSK Kunsthause in
Potsdam, Foto: Ladislav Zajac

Overview

Accessibility at a glance

- Parking lot for people with disabilities
- Stepless entrance via a ramp
- Guidance system with floor indicators
- All rooms and facilities that can be used by guests are accessible without steps via an elevator
- 90 cm minimum width of all raised passages/doors
- WC for people with disabilities
- Assistance dogs welcome
- Booklet in easy language
- Audio guide, via QR code in the exhibition, smartphone or via audio guide devices
- Information in German sign language and in plain language on the website

Information for people with walking difficulties and wheelchair users

All areas relevant for testing meet the quality criteria of the label "**Accessibility certified – accessible for people with walking disabilities and for wheelchair users**".

Some **information on accessibility** are listed below. For detailed information please see the evaluation report.

- There is a parking lot for people with disabilities.
- Potsdam Central Station is approx. 350 m from the entrance.
- All rooms and facilities that can be used by guests are accessible without steps/at ground level or via a ramp (at the entrance) or an elevator.
- There are no gradients of more than 6%.
- All doors/passages that can be used by guests and are raised are at least 90 cm wide.
- The counter/cash desk is 80 cm high at its lowest point
- Exhibits and information can mainly be viewed while seated.
- Seating is available.
- There is a public WC for people with disabilities, which can be accessed from both sides (at least 90 cm). The grab rails on the toilet can be flipped-up.

Information for people with hearing impairments and deaf people

Some **information on accessibility** are listed below. For detailed information please see the evaluation report.

- An alarm is clearly visible throughout the building.
- There is no audio induction loop system.
- An outgoing emergency call in the elevator is only confirmed acoustically. Alternatively, stairs are available.
- Information about the exhibits is provided in writing.
- Videos in German sign language are available on the website.

Information for visually impaired and blind people

All areas relevant for testing meet the quality criteria of the label "**Accessibility certified – partially accessible for people with visual impairments and partially accessible for blind people**".

Some **information on accessibility** are listed below. For detailed information please see the evaluation report.

- Assistance dogs are welcome.
- The signage (for orientation) is designed in easily legible and high-contrast lettering.
- There is a guidance system with floor indicators.
- All elevated areas that can be used by guests are brightly lit and glare-free.
- An outgoing emergency call in the elevator is confirmed acoustically. The stopping position is announced by voice in the elevator.
- Stairs have visually contrasting edges on at least the first and last step. Stairs have a handrail on at least one side.
- Information on the exhibits is visually rich in contrast.
- Information is not available in Braille or prismatic writing.

Information for guests with cognitive impairments

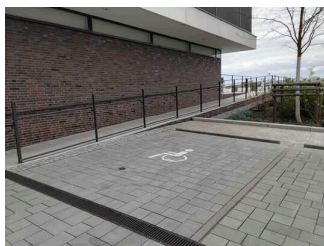
All areas relevant for testing meet the quality criteria of the label "**Accessibility certified – accessible for with cognitive impairments**".

Some **information on accessibility** are listed below. For detailed information please see the evaluation report.

- Potsdam Central Station is approx. 350 m from the entrance.
- The name of the museum is clearly recognizable from the outside.
- The destinations of the paths are within sight or there are signs at a constantly visible distance.
- Information about the exhibits is provided in writing. A booklet in easy-to-read language is available.
- The website contains information in plain language.

Image Gallery

We have put together some photos from the company / offer for you. You can find more photos in the detailed reports.



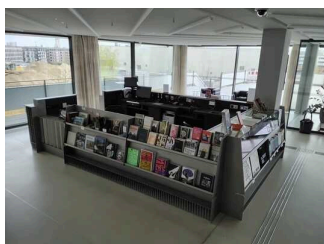
Parking

©Marina Rochel



Entrance

©Marina Rochel



Cash desk / Ticket counter

©Marina Rochel



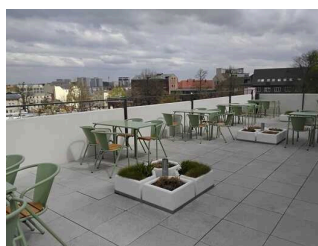
Showrooms

©Marina Rochel



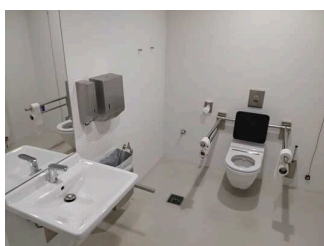
Café

©Marina Rochel



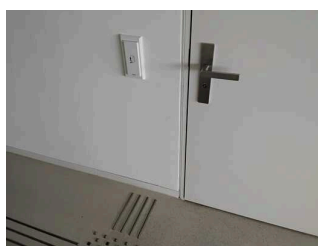
Café

©Marina Rochel



Public toilet

©Marina Rochel



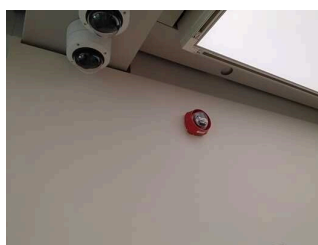
Public toilet

©Marina Rochel



Aids

©Marina Rochel



Aids

©Marina Rochel



Aids

© Josefine Weiß



Operating elements / guidance system

©Marina Rochel



Operating elements / guidance system

©Marina Rochel

Information on the "Tourism for All" labeling system

All establishments and locations certified with the label "Tourism for All" meet the following quality criteria:

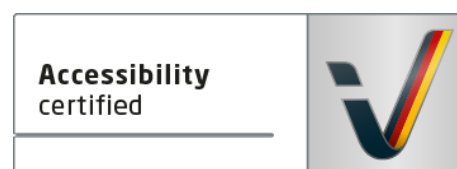
- Data and information on accessibility are collected and checked on site by **external, specially trained evaluators**. The method is not based on self-assessments.
- Data on accessibility is available **in detail** and can be viewed by the guests.
- At least one staff member has successfully passed a **training** on "**Accessibility as a comfort and quality feature**".

The labeling – explanation of the logos and pictograms

The label "**Information about Accessibility**" indicates that detailed and verified information on accessibility is available for all groups of people.



The label "**Accessibility certified**" is based on "Information about Accessibility". It means that the quality criteria defined for specific groups of people are met partially or completely.



The label "**Accessibility certified**" is available in two requirement levels:

"Accessibility certified: partially accessible".

The quality criteria are partially fulfilled for the pictured group of people, i.e. the establishment/location is partially accessible for wheelchair users. The "i" in the pictogram indicates that it is recommended to read again carefully whether the offer meets all (your oder the guest's) individual requirements.



"Accessibility certified: accessible".

The quality criteria are fulfilled for the pictured group of people, i.e. the establishment/location is accessible for wheelchair users.



There are defined quality criteria for **seven groups of people** and a **specific pictogram** for each group.

People with walking disabilities



Wheelchair users



People with hearing impairment



Deaf people



People with visual impairments



Blind people



People with cognitive impairments

