

# DAS MINSK

## KUNSTHAUS IN POTSDAM

**WOHNKOMPLEX: ART AND LIFE IN PLATTENBAU**  
**CURATED BY KITO NEDO**

**September 6, 2025 – February 8, 2026**

**Press preview: September 4, 2025, 11 AM**

### **Contents of the press kit**

• Press release	P. 2
• Exhibition text	P. 5
• Short biography Kito Nedo	P. 8
• The DAS MINSK App	P. 9
• Program <i>Wohnkomplex</i>	P. 10
• Program for the temporary installation <i>UP!</i> by Katharina Gaenssler	P. 20
• Collection and Foundation	P. 23
• List of artworks	P. 26

### **PRESS CONTACT**

**ARTPRESS** – Ute Weingarten  
Romana Weissbacher  
weissbacher.artpress@uteweingarten.de  
+49 (0)30 48 49 63 50

Download images:



# DAS MINSK

## KUNSTHAUS IN POTSDAM

### PRESS RELEASE

#### ***Wohnkomplex: Art and Life in Plattenbau***

**Curated by Kito Nedo**

**September 6, 2025 – February 8, 2026**

In September 2025, DAS MINSK Kunsthaus in Potsdam will present the exhibition *Wohnkomplex: Art and Life in Plattenbau*. In this exhibition, guest curator Kito Nedo explores the question of how East German *Plattenbau* complexes are represented in art.

*Wohnkomplex* shows approximately fifty works by the artists Karl-Heinz Adler, Sibylle Bergemann, Manfred Butzmann, Kurt Dornis, Markus Draper, Wolfram Ebersbach, Nina Fischer & Maroan el Sani, Seiichi Furuya, Peter Herrmann, Sebastian Jung, Gisela Kurkhaus-Müller, Harald Metzkes, Sabine Moritz, Henrike Naumann, Manfred Pernice, Uwe Pfeifer, Sonya Schönberger, Nathalie Valeska Schüler, Wenke Seemann, Robert Seidel, Christian Thielke, Stephen Willats, and Ruth Wolf-Rehfeldt.

Installations, paintings, drawings, photographs, and films created since the 1970s will be presented. The exhibition brings together works that approach the *Plattenbau* in various ways – as a living space, as a symbol of social utopias, and as a projection of societal changes. The *Plattenbau* is not only viewed as architectural heritage, but also as a cultural space of resonance that raises questions about belonging, community, and memory. The exhibition intertwines artistic works with sociopolitical issues and reflects on how urban spaces influence both social structures and ways of life.

In her works from the early 1990s, Sabine Moritz draws on the collective memory of dwelling. From recollections of her childhood in the *Plattenbau* district Jena-Lobeda, her drawings connect individual experiences with architectural structure.

Seiichi Furuya's photographs were created "against forgetting," as fragments of memory and documents of a bygone time. For the exhibition, he has selected nearly 300 photographs of *Plattenbauten*, interiors, and TV stills from his time in East Berlin and Dresden between 1985 and 1989, which will be projected in a continuously changing, randomly ordered sequence.

From the 1970s onwards, Uwe Pfeifer engaged intensively with Halle-Neustadt, where he himself lived. His paintings show the deserted urban spaces of the large socialist housing development and are precise analyses of everyday life, permeated by melancholy, urban dystopia, and quiet criticism. Pfeifer's work not only depicts the newly created architecture, but also produces equally psychologically charged images from the interiors of the housing estate.

# DAS MINSK

## KUNSTHAUS IN POTSDAM

In Sibylle Bergemann's photo series *P2* (1974 –1981), there seems to be little left of the progressive housing utopia of the 1960s. In the serial-conceptual photographs of living rooms, one sees a retreat into private space and the fading of a socialist promise.

In his installation *Grauzone* [Gray Zone] (2015), Markus Draper reconstructs GDR *Plattenbauten* in model format – buildings where RAF members went into hiding in the 1980s with the help of the Stasi. The work plays with East- and West-German clichés and exposes the deceptive dichotomy of German-German history.

In her work *Aufriss II* [Layout II], Leipzig-born artist Nathalie Valeska Schüler (b. 1995) explores the GDR *Plattenbau* type PH16 – realized as an example in Leipzig-Grünau – as a symbol of societal utopias, associations, and ruptures. Using close-up photographs, 3D-printed models, and analyses of architectural structures, Schüler interweaves material traces – such as fingerprints in asbestos-containing Morinol – with questions of visibility, origin, and dwelling, then and now.

*Wohnkomplex* opens new perspectives on a model of building and living that continues to resonate today. The *Plattenbau* was originally at the heart of GDR social policy, a place of socialization and a symbol of real socialist progress – until 1990. After the fall of the GDR, it became a stage for painful transformations, emblematic of social decline and racist violence. As modern ruins, the buildings awaited demolition, were renovated, or repurposed. The *Plattenbau* never became a monument, but has remained a living presence. It is a place of GDR memory, where life continues.

### EXHIBITION CATALOGUE

The catalogue *Wohnkomplex – Art and Life in Plattenbau* will be published by DISTANZ Verlag to accompany the exhibition in German and English. This doesn't merely present the works on view at MINSK, but also offers an art and cultural historical reassessment of an important chapter in GDR and architectural history. Alongside texts by Kito Nedo and Kevin Hanschke, the catalogue also includes guest contributions on the interplay between art and life in *Plattenbau*: a literary essay by author Grit Lemke, a cultural-historical analysis of GDR *Plattenbau* photography by cultural historian professor Bernd Lindner, a glossary of essential terms related to the "*Platte*" complex by art historian Juliane Richter, and a chronicle of the development of *Plattenbau* architecture and artistic interior and exterior perspectives on this field by architect Philipp Meuser.

# DAS MINSK

## KUNSTHAUS IN POTSDAM

### PRESS CONTACT

**ARTPRESS** – Ute Weingarten  
Romana Weissbacher  
weissbacher.artpress@uteweingarten.de  
+49 (0)30 48 49 63 50

We would be happy to assist you if you need further information or images.

### FURTHER INFORMATION

DAS MINSK Kunsthaus in Potsdam  
Max-Planck-Straße 17  
14473 Potsdam  
info@dasminsk.de

www.dasminsk.de  
Instagram: @dasminsk

**OPENING HOURS**  
Daily except Tuesdays  
Wednesday to Monday 10 am – 7 pm

**ADMISSION**  
10 Euros, 8 Euros concession

Combined ticket 20 Euros, 12 Euros concession  
The combined ticket is valid for the Museum Barberini and DAS MINSK Kunsthaus in Potsdam.

DAS MINSK Kunsthaus in Potsdam is a project of the Hasso Plattner Foundation. The goal of the Hasso Plattner Foundation is to promote the digitalization of scholarship and education, to improve access to art and culture, and to support the preservation of the environment.

www.plattnerfoundation.org

# DAS MINSK

## KUNSTHAUS IN POTSDAM

### EXHIBITION TEXT

The *Plattenbau* was originally at the heart of GDR social policy, a site of socialization and a symbol of real socialist progress—until 1989. After the fall of the GDR, it became a stage for painful transformations, emblematic of social decline and racist violence. As modern ruins, many buildings were demolished, renovated, or repurposed. Yet, the *Plattenbau* never disappeared—nor did it become a monument. It remains a place of memory, where life continues. Its architecture is polarizing. Even today, it serves as a stage for different ways of living, coexisting side-by-side in individual housing units, while also embodying a collective experience shared by millions across generations and social backgrounds. This architecture is a medium for the history of how we live, passed down from one generation to the next, shaping social development in lasting ways. And finally, the *Plattenbau* reminds us of the enduring relevance of housing as a sociopolitical issue: the creation and preservation of affordable spaces for living in the cities.

The exhibition *Wohnkomplex: Art and Life in Plattenbau* explores how East German *Plattenbau* complexes are addressed in contemporary art. It features installations, paintings, drawings, photographs, and films from the 1970s to today. The show brings together works that view and interpret the *Plattenbau* differently—as places of habitation, alienation, memory, radicalization, or escapism. It is also seen as a symbol of social utopia or projections of societal changes, such as women's emancipation; or as an architecture that has been aesthetically and politically delegitimized and pushed toward demolition.

The *Plattenbau* is seen not only as architectural heritage, but also as a cultural and social space of resonance that raises questions about belonging, community, and memory. When viewed holistically, the socialist city emerges as a cultural construct. The exhibition intertwines artistic works with sociopolitical issues and reflects on how urban spaces influence both social structures and ways of life.

The term "*Wohnkomplex*" was once used in GDR urban planning to designate a planning unit designed for about 5,000 residents, the catchment area of a school. The *Wohnkomplex* became a defining feature of large-scale East German housing developments, reflecting both the structural and functional organization of these residential areas. A standardized architectural language was developed not only for the apartment buildings, but also for everyday infrastructure: the *Kaufhalle* as a shopping center for daily necessities; childcare facilities such as nurseries and kindergartens for the working population; schools; and local medical care provided through the *Polikliniken*. Each *Wohnkomplex* formed a self-contained unit, an architectural and social system that functioned like an independent satellite town. Around one quarter of the GDR population lived in the "*Platte*." The large housing complexes built in prefabricated styles were places where the promise of modernity and class-

# DAS MINSK

## KUNSTHAUS IN POTSDAM

less coexistence briefly became a reality. The end of the GDR marked a rupture: the urban structure incorporated a social model that could not easily be transferred to the post-socialist context after 1990. At the same time, a process of renovation, reconstruction, subjective inscription, and spatial appropriation accelerated—one that had already begun when the buildings were first inhabited.

Well-known districts, often providing housing for over 10,000 people, include Berlin-Hellersdorf, Berlin-Marzahn, and Berlin-Hohenschönhausen, Erfurt-Roter Berg, Potsdam-Stern, Dresden-Gorbitz, Rostock-Lütten Klein, Jena-Lobeda, Halle-Neustadt, and Leipzig-Grünau. To this day, these areas continue to shape the architecture, urban planning, and urban fabric of their cities. But *Plattenbauten* were not only constructed in large housing complexes or new development areas on the “green-field” outskirts of the city—they were also built in the city centers. The *Plattenbau* was omnipresent, both in large cities and small towns across the GDR, in the periphery as well as the center. It was a lived reality everywhere and remained part of one’s personal residential history even after moving.

Among other things, the exhibition explores how life in the *Platte* has become part of the collective memory of housing, and to what extent art reflects housing as an internalized history of experience. When the Berlin Wall fell in 1989, around 171 new housing developments existed in the GDR. Their history, along with the stories of their residents, is told for the first time in this exhibition through artistic reflections on the *Plattenbau*.

### THANKS TO THE LENDERS

Albertinum—Staatliche Kunstsammlungen Dresden; Galerie der Berliner Graphikpresse; the estate of Sibylle Bergemann and LOOCK, Berlin; Brandenburgisches Landesmuseum für moderne Kunst; the Thomas Fischer Gallery; Kunstpalast, Düsseldorf — Donation by Florian Peters-Messer; Leibniz Institute for Astrophysics; Museum der bildenden Künste Leipzig; Museum für Utopie und Alltag, Bestand Beeskow; Potsdam Museum—Forum für Kunst und Geschichte; Galerie Neu, Berlin; the estate of Ruth-Wolf Rehfeldt; Haas/Schaller Collection; Stiftung Haus der Geschichte der Bundesrepublik Deutschland.

Our sincere thanks also go to the Hasso Plattner Foundation.

# DAS MINSK

KUNSTHAUS IN POTSDAM

COOPERATION PARTNER

FILMMUSEUM  
POTSDAM

MEDIA PARTNERS

**arte**

**monopol**  
Magazin für Kunst und Leben

**tipBerlin**

**THEBERLINER**



Yorck  
Kinogruppe

# DAS MINSK

## KUNSTHAUS IN POTSDAM

### SHORT BIOGRAPHY KITO NEDO

Kito Nedo works as a freelance writer, editor, critic, and journalist for various media outlets. His focus lies on contemporary art and cultural policy. In recent years, his articles have appeared in publications such as Süddeutsche Zeitung, art – Das Kunstmagazin, frieze, and Artforum International. Nedo is also the author of numerous catalogue essays on contemporary art. In 2017, he was awarded the ADKV–Art Cologne Prize for Art Criticism. He studied Media and Cultural Studies as well as Modern and Contemporary History in London, Berlin, and Leipzig. He lives in Basel and Berlin.



# DAS MINSK

## KUNSTHAUS IN POTSDAM

### THE DAS MINSK APP

The audio guide is easily accessible through our free app. In addition, the app offers exciting podcasts, in-depth information about our exhibitions, and background insights into the permanent artworks in and around DAS MINSK.

Download now:



# DAS MINSK

KUNSTHAUS IN POTSDAM

PROGRAM *WOHNKOMPLEX*

# DAS MINSK

## KUNSTHAUS IN POTSDAM

### READINGS

#### A literary series accompanying the exhibition

Monthly readings will take place to accompany the exhibition *Wohnkomplex: Art and Life in Plattenbau*, inviting reflection on architecture, *Plattenbauten* in the GDR, and their critical resonance today.

Moderated by Maria-Christina Piwowarski, the readings take place monthly in Café Hedwig or in MINSK's foyer. A visit to the exhibition from 5PM onwards is included in the event ticket. The events are held in German.

Further information and dates will be announced soon.

Dates:

September 18, 2025, 7 pm

Katja Ostkamp, *Marzahn mon Amour. Geschichten einer Fußpflegerin*, 2019, Hanser Berlin

October 17, 2025, 7 pm

Florentine Anders, *Die Allee*, 2025, Verlag Kiepenheuer & Witsch

November 20, 2025, 7 pm

Hendrik Bolz *Nullerjahre. Jugend in blühenden Landschaften*, 2022, Verlag Kiepenheuer & Witsch

December 10, 2025, 7 pm

Grit Lemke *Kinder von Hoy. Freiheit, Glück und Terror*", 2021, Suhrkamp

#### **From Luanda and Maputo to East Berlin: Memories of African Workers in the GDR**

Book presentation and talk with Marcia Schenck, Katharina Warda, and comic artist Birgit Weyhe

In cooperation with the University of Potsdam

October 30, 2025, 7 pm

#### **Zingster Straße 25**

#### **Dramatic reading by Sonya Schönberger in conversation with Kito Nedo**

Eva Weißenborn reads

November 5, 2025, 7 pm

Cost: 10 € plus admission

# DAS MINSK

## KUNSTHAUS IN POTSDAM

### **The Big Promise**

**An illustrated reading about the author Werner Braünig by Anna-Lena Wenzel**

November 6, 2025, 7 pm

Cost: 10 € plus admission

### **MINSKBAR**

September 11, 2025, 7–11 pm

Cost: Admission is free for children and young people under the age of 18.

On Thursday, September 11, 2025, DAS MINSK invites you to the last edition of MINSKBAR this summer. On MINSKBAR evenings, both DAS MINSK and the bar are open for extended hours. There will then be an opportunity to speak with mediators in the exhibition and to enjoy music at Café HEDWIG and on the MINSK's terraces. The music program of MINSKBAR is curated by the musician Masha Qrella.

### **Line-Up:**

Mieke Miami

Window Magic

Daniel Meteo (DJ)

### **MINSKDAY**

Admission to DAS MINSK Kunsthaus in Potsdam will be free on the last Sunday of every month. Everyone is welcome to visit the exhibition and enjoy the Café Hedwig. On MINSKDAY there will additionally be two public tours at 2 pm and 3 pm, which can be booked for 4 €. We recommend booking a timeslot ticket in advance and look forward to your visit.

Dates:

September 28, 2025, October 26, 2025, November 30, 2025, December 28, 2025, January 25, 2026

### **Spuk im Hochhaus**

**A TV series evening for children**

November 1, 2025, 4–7 pm

November 2, 2025, 4–7 pm

As part of the exhibition *Wohnkomplex*, DAS MINSK will present the seven-part children's series *Spuk im Hochhaus* [Ghost in the High-Rise] by Günter Meyer and C.U.

# DAS MINSK

## KUNSTHAUS IN POTSDAM

Wiesner on Halloween weekend. The series was first broadcast on GDR television in 1982.

The story takes place in the heart of East Berlin: where the criminal innkeepers August and Jette Deibelschmidt once stole money from their guests, there now stands a Plattenbau. Cursed, the two reappear in the high-rise two centuries after their deaths—and must perform seven good deeds to atone for their past crimes. Their return causes quite a stir among the residents—not least because they can walk through walls.

*Spuk im Hochhaus* was hugely popular and is now regarded as one of the television classics of the GDR. Beyond its entertaining story, it provides a historical snapshot of everyday life in a *Plattenbau* high-rise in the GDR.

### **Go Clara Go**

**Film screening followed by a talk with director Sylvie Kürsten**

November 13, 2025, 7 pm

### **Beton-Pop. Variations on Concrete**

**Listening session mit Alex Pehlemann plus secret live act**

November 21, 2025, 7 pm

### **WINTER MARKET**

November 28–30, 2025

On the first weekend of Advent, DAS MINSK invites you to a festive market!

### **Chemnitz Concrete**

**Quiz Evening with Beate Düber and Jan Kummer**

January 31, 2025

Note: Further events will follow with Markus Draper, Sabine Moritz, Christian Thielke, and others will follow.

# DAS MINSK

## KUNSTHAUS IN POTSDAM

### FILM SERIES ACCOMPANYING THE EXHIBITION *WOHNKOMPLEX*

Parallel to the exhibition *Wohnkomplex: Art and Life in Plattenbau*, the Filmmuseum Potsdam presents an accompanying film program. While the exhibition explores how East German *Plattenbau* developments have been represented in art, the film program continues this examination through feature and documentary films spanning the 1960s to the early 2000s.

A DAS MINSK exhibition ticket entitles you to reduced admission to the film series at the Filmmuseum Potsdam. Conversely, presenting a ticket to one of the film screenings entitles you to a reduced entry to the *Wohnkomplex* exhibition at DAS MINSK.

#### **September 11, 2025, 6 pm**

*Die Architekten* [The Architects]

D: Peter Kahane, A: Rita Feldmeier, Kurt Naumann, Uta Eisold, GDR 1989/90, 97'

Introduction to the exhibition and moderation: Kevin Hanschke (journalist and cultural manager), Guest: Peter Kahane (director)

#### **October 12, 2025, 6 pm**

*Unser kurzes Leben* [Our Short Life]

D: Lothar Warneke, A: Simone Frost, Hermann Beyer, Gottfried Richter, GDR 1981, 113'

#### **November 14, 2025, 6 pm**

*Wohnkomplex* short films

*Gestern und die neue Stadt* [Yesterday and the New City]

D: Wolfgang Bartsch, GDR 1968, Doc., 26'

*Erinnerungen an Häuser* [Memories of Houses]

D: Eduard Schreiber, GDR 1980, Doc., 30'

*Stadtlandschaften: Knebel, Magnus, Pfeifer* [Urban Landscapes: Knebel, Magnus, Pfeifer]

D: Karlheinz Mund, GDR 1981, Doc., 30'

Introduction and moderation: Jeanpaul Goergen (film historian)

Guest: Uwe Pfeifer (artist), Karlheinz Mund (director, invited), Kevin Hanschke (journalist and cultural manager)

# DAS MINSK

## KUNSTHAUS IN POTSDAM

**January 17, 2026, 5 pm / 7 pm / 9 pm**

The Neustadt Trilogy by Thomas Heise

*Stau – Jetzt geht's los* [Jammed – Let's Get Moving]

D: Thomas Heise, GER 1992, Doc., 85'

*Neustadt (Stau – Der Stand der Dinge)* [Neustadt (The State of Things)]

D: Thomas Heise, GER 2000, Doc., 90'

*Kinder. Wie die Zeit vergeht* [Children. As Time Flies]

D: Thomas Heise, GER 2007, Doc., 90'

**January 23, 2026, 6 pm**

*Spur der Steine* [Trace of Stones]

D: Frank Beyer, A: Manfred Krug, Eberhard Esche, Krystyna Stypułkowska, GDR 1966,  
139'

# DAS MINSK

## KUNSTHAUS IN POTSDAM

### GUIDED TOURS

#### Curatorial tour

##### Insights into the current exhibition

September 29, 2025, 5 pm

October 2, 2025, 5 pm

November 6, 2025, 5 pm

December 4, 2025, 5 pm

January 8, 2026, 5 pm

February 5, 2026, 5 pm

Cost: 10 € plus admission

Kito Nedo (curator), Luisa Bachmann (assistant curator), and Kevin Hanschke (catalog editor) lead visitors through the exhibition *Wohnkomplex*, offering curatorial insights into the artists' works and the development of the current presentation.

#### Public Guided Tour in German

##### Tour through the current exhibition

Every Thursday and Friday at 11 am, Saturday at 12 pm and Sunday at 2 pm

Cost: 4 € plus admission

The public tour guides visitors through the current exhibitions. In addition to offering background information about the exhibited works and artists, the tour also offers glimpses into the history of the exhibition house. In dialogue with the art, and also with each other, the tour allows us to look forwards, backwards, and to the side.

#### Architecture and art tour of DAS MINSK

Every Saturday at 2 pm

Every Sunday at 3 pm

Cost: 4 € plus admission

This tour explores the architecture and history of the building. Built in the 1970s in the modernist style of the GDR, the former terrace restaurant "Minsk" is rich in memories. After its closure in 2000, the building stood empty and fell into decay, until 2018, when a debate about its fate flared up again, ultimately leading to its reopening as an exhibition space.

The tour offers insight into the historic "Brauhausberg Ensemble," including the swimming pool, restaurant, and terrace area, as well as the architectural features of its transformation into DAS MINSK Kunsthau in Potsdam.



# DAS MINSK

## KUNSTHAUS IN POTSDAM

The tour also explores artistic interventions and works installed in and around the building, including Robin Rhode's site-specific mural, *Der Botanische Garten* [The Botanical Garden], on the southern façade of blu Sports and Leisure in Potsdam.

### **Family Sunday**

September 14, 2025, 12 pm

October 12, 2025, 12 pm

November 9, 2025, 12 pm

December 14, 2025, 12 pm

January 11, 2026, 12 pm

February 8, 2026, 12 pm

Cost: for adults 4 € plus admission; for children 3 € including materials; alternating creative activities

On Family Sunday, families are invited to explore art and creativity. While parents take part in a guided tour of the current exhibition, children explore the artworks in their own age-appropriate tour. Afterward, they create their own small works of art in a creative workshop—whether painting, building, or designing—drawing inspiration from the exhibition and guided by experienced art educators. Family Sunday combines a relaxed art experience for adults with creative expression for children, making a museum visit a special experience for the whole family.

Note: suitable for families with children between the ages of 5 and 8.

### **Bring your Baby to DAS MINSK**

Every last Monday of the month at 2 pm

Cost: 4 € plus admission

We offer a special tour on the last Monday of each month for parents on parental leave who would like to visit with their little ones. In a relaxed atmosphere, a docent alternates between guiding you through the current exhibition and offering insights into the architecture and art of DAS MINSK. The exhibition spaces are fully accessible and can comfortably be visited with a stroller or a baby carrier. After the tour, there's an opportunity to chat with other parents in Café Hedwig.

Note: suitable for babies up to age 1.

# DAS MINSK

## KUNSTHAUS IN POTSDAM

### WORKSHOPS

#### **Ceramics Workshop for adults With the HB-Werkstätten für Keramik**

October 19, 2025, 1:30 pm and 3:30 pm

Cost: 25 € plus admission

In the footsteps of Hedwig Bollhagen: Together with painters from the Hedwig Bollhagen Workshops in Marwitz, classic HB ceramics are painted with their own patterns. After the workshop, the painted ceramics will be brought to the Bollhagen workshops where they will be glazed and fired. The results can be picked up from DAS MINSK. The exact pick-up date will be announced on the day of the workshop. The ticket price includes the painting of one blank.

#### **Ceramics Workshop for children from 8 years old With the HB-Werkstätten für Keramik**

October 19, 2025, 12 pm

Cost: 20 €

In the footsteps of Hedwig Bollhagen: Together with painters from the Hedwig Bollhagen Workshops in Marwitz, classic HB ceramics are painted with their own patterns. After the workshop, the painted ceramics will be brought to the Bollhagen workshops where they will be glazed and fired. The results can be picked up from DAS MINSK. The exact pick-up date will be announced on the day of the workshop. The ticket price includes the painting of one blank.

#### **Discover DAS MINSK Workshop for children aged 6 to 12**

October 30, 2025, 11 am–12:30 pm

October 31, 2025, 11 am–12:30 pm

November 2, 2025, 2–3:30 pm

Cost: 5 €

What is DAS MINSK? What is a Kunsthaus exactly? And what would a Kunsthaus look like if children could design one?

Together, we'll explore DAS MINSK and learn more about the building, its history, and what it is today. We'll talk with people who work at the museum, visit the exhibition, and get a behind-the-scenes look at how an art institution operates, how exhibitions are created, and the many different forms of artistic expression. But this workshop isn't just about listening—we'll also get hands-on: drawing, building, and solving puzzles as we explore creatively together.

# DAS MINSK

## KUNSTHAUS IN POTSDAM

### **Drop-in, Creative workshop for children**

On MINSKDAY, 2–4 PM

As part of the MINSKDAY, a creative workshop for children aged 3 and over will be held in the foyer of our building. The children can create, paint, and design under the guidance of experienced art educators. Whether postcards, ornaments, sparkling decorations, or small gifts, everyone is invited to take part. This workshop offers the opportunity to participate without prior registration or a fixed duration. All materials are provided and participation is free of charge.

### **Experiencing Architecture**

#### **A creative journey of discovery**

September 20, 2025, 2 pm

November 15, 2025, 2 pm

Cost: 10 € plus admission

### **Classism and Plattenbau**

#### **Workshop for adults as a format for reflection**

January 18, 2026, 11 am–2 pm, including a break

Cost: 10 € plus admission

For more information, events and tickets visit our website at  
[www.dasminsk.de/en/program](http://www.dasminsk.de/en/program)

# DAS MINSK

KUNSTHAUS IN POTSDAM

## PROGRAM

FOR THE TEMPORARY INSTALLATION *UP!* BY KATHARINA  
GAENSSLER

SEPTEMBER 20 – OCTOBER 13, 2025

# DAS MINSK

## KUNSTHAUS IN POTSDAM

From September 20, artist Katharina Gaenssler (\*1974, Munich) will activate the outdoor area of DAS MINSK Kunsthaus in Potsdam with a temporary installation. For three weeks, a six-meter-tall, vividly colored balloon—illuminated from within at night—will soar above DAS MINSK's terrace, visible from afar as a sculptural image-object. Not as an flying object, but as a social sculpture.

The work *UP!* recalls one of the GDR's most spectacular escape stories: the home-made hot-air balloon used by the Strelzyk and Wetzel families to cross the inner-German border into the Federal Republic. Gaenssler draws on an iconic event of German history and transforms the balloon into an unmistakable symbol that connects memory and the present..

*UP!* is on loan from the Haus der Bayerischen Geschichte in Regensburg, where Gaenssler won an art-in-architecture competition with the project. Since 2024, a scaled-down replica of the escape balloon has risen above the museum on selected days throughout the year.

### OPENING ON SEPTEMBER 20, 2025

- 4:30 pm: Exclusive preview for children and families: watch the balloon being inflated live
  - 4:30–5 pm: Introduction to the work and its historical context for children
  - 5 / 5:30 pm: Chorwerk-potsdam performance and collective "Human Rights Singalong" with the audience
  - 6–9 pm: Art:Dialogue in the exhibition *Wohnkomplex*
  - 6 pm: Official opening and artist talk with Katharina Gaenssler and Anna Schneider
- Followed by a DJ set by Eric D. Clark

### ANNIVERSARY WEEKEND – 3 YEARS OF DAS MINSK ON SEPTEMBER 27, 2025

- 2–5 pm: Drop-in workshops for children, featuring creative activities linked to the balloon installation
- 4 pm: Birthday cake cutting, designed by Chelsea Turowsky at Café Hedwig
- from 6 pm: DJ-Set by Tereza

# DAS MINSK

## KUNSTHAUS IN POTSDAM

### FILM PROGRAM FOR THE INSTALLATION *UP!*

October 2, 2025, 7 pm

Film Screening *Verbotener Flug*, 2014 by Hester Overmars (director), 56 min  
Chronicle of a failed escape attempt by Michael Anhalt (artist)

October 3, 2025, 6 pm: Film Screening *Ballon*, 2018, by Michael Herbig, 125 min,  
German feature film, followed by a discussion with Günter Wetzel

October 4, 2025, 6 pm: Film Screening *Green Border*, 2023 by Agnieszka Holland,  
147 min

For more information, events and tickets visit our website at  
[www.dasminsk.de/en/program](http://www.dasminsk.de/en/program)

# **DAS MINSK**

**KUNSTHAUS IN POTSDAM**

**COLLECTION AND FOUNDATION**

# DAS MINSK

## KUNSTHAUS IN POTSDAM

*"We're showing works from the collection at DAS MINSK that were created after 1945 and deal with the GDR. I've always been interested in the diversity of the art from the former GDR. It's remarkable how many of the painters in particular have dealt with modernism and the Old Masters in their own unique way. The fact that this art is still only rarely seen in museums is a great pity. Showing these works their due appreciation at DAS MINSK can be understood as a recognition of the life achievements of the GDR citizens in general."*

— Hasso Plattner

### **Art from the Hasso Plattner Collection at DAS MINSK Kunsthaus in Potsdam**

The former terrace restaurant "Minsk", built in the 1970s in the modernist style of the GDR, has become a place of encounter between modern and contemporary art—and between people. Artworks from the former GDR, which are part of the Hasso Plattner Collection, will be shown here in new contexts.

*"For many Potsdamers, the building is associated with happy memories. The architecture from the time of the GDR is part of the city's history and I want to give the place back to the people of Potsdam."*

—Hasso Plattner

One focus of the Hasso Plattner Collection is art from the former GDR, and DAS MINSK Kunsthaus in Potsdam maintains the works from the collection that were created after 1945. Developed over the course of years, the extensive collection of significant works by renowned artists from the former GDR, such as Wolfgang Mattheuer, Bernhard Heisig, and Ruth Wolf-Rehfeldt, forms the starting point for the museum's program. Works from this time will be brought into dialogue with contemporary art at DAS MINSK.

*"In the new exhibition space, works from after 1945 in the collection will find a home. Art from the former GDR is still scarcely represented in museums today and does not receive the appreciation it deserves. We want to change that by making the works available to the public and showing how diverse and significant the art of this time is."*

—Hasso Plattner



# DAS MINSK

## KUNSTHAUS IN POTSDAM

### **Commitment to Art, Science, and Nature Conservation**

As cofounder and long-time chairman of the software company SAP, Hasso Plattner is one of Germany's most distinguished entrepreneurs. The city of Potsdam now has him to thank for founding two museums and the Hasso Plattner Institute. He was honored with honorary citizenship of Potsdam in 2017 for his great commitment to the city as his second home.

The long-term philanthropic activities of the Plattner family have been consolidated into the Hasso Plattner Foundation since 2015. The Hasso Plattner Foundation's mission is to educate and inspire generations. Through its initiatives, the Foundation aims to accelerate the adoption of digital technologies, support environmental science and conservation, and foster connections through art and culture.

As sponsor and shareholder of both cultural venues DAS MINSK Kunsthaus in Potsdam and Museum Barberini, the Hasso Plattner Foundation finances museum operations, the exhibition program, and the expansion of the collection.

*"The former terrace restaurant Minsk is connected with memories for many Potsdamers. Many of them fought for the preservation of the old Minsk precisely for this reason, because to a certain extent it was also about the preservation of their own identity and that of the city. DAS MINSK wants to pick up exactly where it left off and once again establish itself as a place of encounter that extends beyond art. Here we show, search, discuss, endure, and bring together, and hopefully also dance and laugh together again. I hope for being together and for each other."*

— Stefanie Plattner

# DAS MINSK

KUNSTHAUS IN POTSDAM

## LIST OF ARTWORKS

# DAS MINSK

## KUNSTHAUS IN POTSDAM



Karl-Heinz Adler (1927–2018)

*Reihung mit unterschiedlichen seriellen Elementen eines variablen Systems*  
[Sequence with Different Serial Elements of a Variable System]

1970/82

Wood, plaster

each 72 x 72 cm

Hasso Plattner Collection



Sibylle Bergemann (1941–2010)

*P2 (Berlin-Lichtenberg, Wohnzimmer eines Häuserblocks)*

[P2 (Berlin-Lichtenberg, Apartment Block Living Room)]

1981/2017

10 Archival pigment prints, posthumous print

each 30 x 43 cm

© Estate Sibylle Bergemann/OSTKREUZ, Courtesy LOOCK, Berlin



Manfred Butzmann (\*1942)

*Baustelle im Zentrum* [Construction Site in City Center]

1986

Etching with aquatint

35,4 x 30,2 cm

Courtesy Galerie der Berliner Graphikpresse



Manfred Butzmann (\*1942)

*Gekachelter Durchgang* [Tiled Passageway]

1982 (Print 1985)

Etching

19,5 x 26,6 cm

Courtesy Galerie der Berliner Graphikpresse



Kurt Dornis (\*1930)

*Zweite Schicht* [Second Shift]

1986

Mixed media on particle board

82 x 101 cm

Albertinum, Staatliche Kunstsammlungen Dresden

# DAS MINSK

## KUNSTHAUS IN POTSDAM

Markus Draper (\*1969)  
*Grauzone* [Gray Zone], 2015:



*Magdeburg, Hans-Grundig-Straße*  
Zinc cast on plinth  
65 x 106 x 25 cm  
Private collection, Cologne



*Neubrandenburg, Ernst-Alban-Straße*  
Zinc cast on plinth  
35 x 96 x 27 cm  
Private collection, Cologne



*Neubrandenburg, Traberallee*  
Zinc cast on plinth  
39 x 98 x 27 cm  
Private collection, Cologne



*Schwedt, Ehm-Welk-Straße*  
Zinc cast on plinth  
35 x 150 x 27 cm  
Private collection, Cologne



*Senftenberg, Wehrstraße*  
Zinc cast on plinth  
35 x 125 x 27 cm  
Private collection, Cologne

# DAS MINSK

## KUNSTHAUS IN POTSDAM



*Frankfurt/Oder, Große Müllroser Straße*  
Zinc cast on plinth  
35 x 84,5 x 27 cm  
Private collection, Cologne



*Berlin-Marzahn, Rosenbecker Straße*  
Zinc cast on plinth  
70 x 144 x 30 cm  
Private collection, Cologne

Markus Draper (\*1969)  
*Zeitungsmeldungen* [Newspaper Reports], 2015:



*Fast perfekte Tarnung* [Nearly Perfect Camouflage]  
Fine art print on paper  
60 x 82 cm  
Courtesy of the artist



*Wahlhilfe* [Election Aid]  
Fine art print on paper  
55 x 69 cm  
Courtesy of the artist



*Am Montagabend* [Monday Evening]  
Fine art print on paper  
77 x 55 cm  
Courtesy of the artist

# DAS MINSK

## KUNSTHAUS IN POTSDAM



*Im ersten Stock* [On the First Floor]

Fine art print on paper

Variable dimensions

45 x 63 cm

Courtesy of the artist



Wolfram Ebersbach (\*1943)

*Hausfassade* [Building Facade]

1974

Oil on masonite

99 x 85 cm

Museum der bildenden Künste Leipzig



Fischer & el Sani

*Klub 2000 – rom, paris, marzahn*

1998

16mm digitized as 2K file, b/w, stereo

11 min

Nina Fischer & Maroan el Sani



Fischer & el Sani

*Klub 2000 – rom, paris, marzahn*

1998

Handmade c-print mounted on Forex

206 x 148 cm

Nina Fischer & Maroan el Sani



Seiichi Furuya (\*1950)

*Plattenbaufotografien, TV-Fotografien und (Küchen-)Interieurs 1985–87*

[Plattenbau Photographs, TV Photographs and (Kitchen) Interiors 1985–87]

2025

Digital slide show, 286 images

ca. 29 min

Courtesy of the artist and Galerie Thomas Fischer

# DAS MINSK

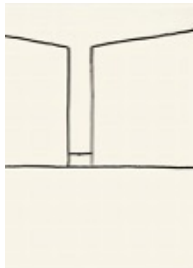
## KUNSTHAUS IN POTSDAM



Seiichi Furuya (\*1950)  
*Juli 1985, Berlin-Ost: Apartment in Falkenberger Chaussee* [July 1985, Berlin-East: Apartment in Falkenberger Chaussee]  
1985  
Super 8 Film, silent  
3:21 min  
Courtesy the Artist and Galerie Thomas Fischer



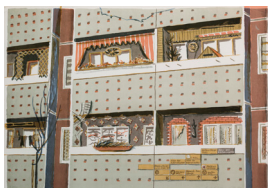
Peter Herrmann (\*1937)  
*Kühe vor dem neuen Tor* [Cows in Front of the New Gate]  
1979  
Oil on canvas  
95 x 120 cm  
Hasso Plattner Collection



Sebastian Jung (\*1987)  
*Abstraktionen* [Abstractions]  
2015  
7 drawings, charcoal on paper  
each 70 x 50  
Sebastian Jung



Sebastian Jung (\*1987)  
*Ost-Schrei* [East Scream]  
2025  
30 drawings, acrylic and gouache on woodchip wallpaper  
Variable dimensions, 224 x 440 cm overall  
Sebastian Jung



Gisela Kurkhaus-Müller (\*1938)  
*Marzahn*  
1982  
Color offset lithography  
58,5 x 84 cm  
Museum Utopie und Alltag (Bestand Beeskow)



# DAS MINSK

## KUNSTHAUS IN POTSDAM



Harald Metzkes (\*1929)  
*Aufbau von Marzahn* [Building Marzahn]  
1984  
Oil on canvas  
130 x 180 cm  
Harald Metzkes



Sabine Moritz (\*1969)  
*Lobeda*  
1991/92  
16 drawings, colored pencil on paper  
each 42 x 29,5 cm  
Private collection



Sabine Moritz (\*1969)  
*Lobeda*  
1991-1994  
18 drawings, colored pencil (and watercolor, oil pastel) on paper  
each 58 x 42 cm  
Private collection



Sabine Moritz (\*1969)  
*Wohnzimmer* [Living Room]  
1992  
Acrylic, charcoal on canvas  
160 x 100 cm  
Studio Sabine Moritz, Cologne



Sabine Moritz (\*1969)  
*Zuhauseblock* [Homeblock]  
1992  
Oil on canvas  
164 x 104 cm  
Studio Sabine Moritz, Cologne



# DAS MINSK

## KUNSTHAUS IN POTSDAM



Sabine Moritz (\*1969)  
*Zuhauseblock mit Stadtplan* [Homeblock with City Map]  
1992  
Oil on canvas  
164,5 x 104 cm  
Studio Sabine Moritz, Cologne



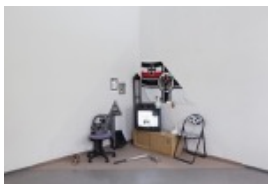
Sabine Moritz (\*1969)  
*Fahnenstangen mit Schule* [Flagpoles with School]  
1992  
Oil on canvas  
159 x 99,5 cm  
Studio Sabine Moritz, Cologne



Sabine Moritz (\*1969)  
*Versammlungsraum* [Conference Room]  
1992  
Oil on canvas  
164 x 104 cm  
Studio Sabine Moritz, Cologne



Sabine Moritz (\*1969)  
*Bushaltestelle* [Bus Stop]  
1992  
Oil on canvas  
159 x 99,5 cm  
Studio Sabine Moritz, Cologne



Henrike Naumann (\*1984)  
*Triangular Stories (Amnesia & Terror)*  
2012  
Two-part installation with video and sound  
Variable dimensions  
Henrike Naumann / Courtesy of the artist

# DAS MINSK

## KUNSTHAUS IN POTSDAM



Manfred Pernice (\*1963)  
*Ohne Titel (hässliche Luise)* [Untitled ("ugly Luise")]  
2004  
Metal, concrete  
185 x 80 x 50 cm  
Kunstpallast, Düsseldorf – Donation by Florian Peters-Messer



Manfred Pernice (\*1963)  
*Ohne Titel (hässliche Luise)* [Untitled ("ugly Luise")]  
2004  
8 compressed wood panels with color copies  
6 pieces each 90 x 190 cm  
2 pieces each 90 x 130 cm  
Courtesy the artist and Galerie Neu, Berlin



Uwe Pfeifer (\*1947)  
*Wäscheleine im Nebel* [Clothesline in the Fog]  
1973  
Oil on masonite  
56 x 70 cm  
Hasso Plattner Collection



Uwe Pfeifer (\*1947)  
*Durchgang in Halle-Neustadt* [Passageway in Halle-Neustadt]  
1971  
Oil on masonite  
58 x 80 cm  
Brandenburgisches Landesmuseum für moderne Kunst



Uwe Pfeifer (\*1947)  
*Bei Vollmond* [Full Moon]  
1973  
Oil on masonite  
62,4 x 84,3 cm  
Brandenburgisches Landesmuseum für moderne Kunst

# DAS MINSK

## KUNSTHAUS IN POTSDAM



Uwe Pfeifer (\*1947)  
*Poetischer Moment* [Poetic Moment]  
1973  
Oil on masonite  
61 x 85,3 cm  
Brandenburgisches Landesmuseum für moderne Kunst



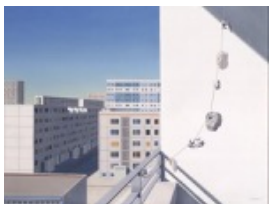
Uwe Pfeifer (\*1947)  
*Antennendach* [Roof with Antennae]  
1973  
Oil on Masonite  
62,5 x 84,5 cm  
Brandenburgisches Landesmuseum für moderne Kunst



Uwe Pfeifer (\*1947)  
*Morgennebel* [Morning Mist]  
1973  
Oil on masonite  
60 x 80 cm  
Leibniz-Institut für Astrophysik Potsdam (AIP)



Uwe Pfeifer (\*1947)  
*Kinderfasching im Neubauviertel* [Children's Carnival in the Neubau district]  
1976  
Oil on masonite  
68 x 89 cm  
Potsdam Museum – Forum für Kunst und Geschichte



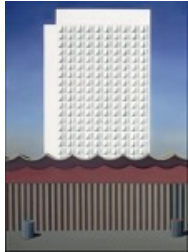
Uwe Pfeifer (\*1947)  
*Beton und Steine* [Concrete and Stones]  
1972  
Oil on masonite  
66 x 86 cm  
Private collection

# DAS MINSK

## KUNSTHAUS IN POTSDAM



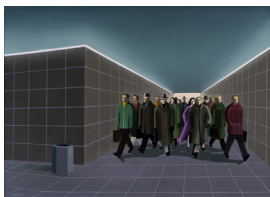
Uwe Pfeifer (\*1947)  
*Nächtliche Szene* [Night Scene]  
1972  
Oil on masonite  
68 × 86 cm  
Private collection



Uwe Pfeifer (\*1947)  
*Betonfassade* [Concrete Facade]  
1973/90  
Oil on masonite  
80 x 60 cm  
Private collection



Uwe Pfeifer (\*1947)  
*Häuser am Abend* [Buildings at Dusk]  
1972  
Oil on masonite  
57 x 79 cm  
Private collection



Uwe Pfeifer (\*1947)  
*Fußgängertunnel* [Pedestrian Tunnel]  
1973  
Oil on masonite  
60 x 83 cm  
Private collection Potsdam



Uwe Pfeifer (\*1947)  
*Schöner Abend* [Lovely Evening]  
1973  
Oil on masonite  
62,5 x 84,5 cm  
Stiftung Haus der Geschichte der Bundesrepublik Deutschland

# DAS MINSK

## KUNSTHAUS IN POTSDAM



Sonya Schönberger (\*1975)  
*Neu-Hohenschönhausen, 1987*  
2018/25  
19 silicone objects  
Variable dimensions  
Sonya Schönberger, artist



Nathalie Valeska Schüler (\*1995)  
*Aufriss II [Layout II]*  
2024  
Inkjet print, aluminum composite, acrylic, PLA  
100 x 171 x 5 cm  
Courtesy Nathalie Valeska Schüler



Wenke Seemann (\*1978)  
*»Plattenbaugeschichten. Eine assoziative Recherche«, aus: Archivdialoge #1 – Bauplan Zukunft* ["Plattenbaugeschichten: An Associative Research", from: Archive Dialogs #1 – Building Plan for the Future]  
2022  
Photographic film  
33 min  
Courtesy Wenke Seemann



Robert Seidel (\*1983)  
*Platte*  
2011  
Egg tempera on canvas  
30 x 44 cm  
Haas/Schaller Collection



Christian Thielke (\*1973)  
*Gerüst [Jungle Gym]*  
2019  
Oil on canvas  
200 x 260 cm  
Hasso Plattner Collection

# DAS MINSK

## KUNSTHAUS IN POTSDAM



Christian Thielke (\*1973)  
*Kaufhalle* [Supermarket]  
2020  
Oil on canvas  
200 x 300 cm  
Hasso Plattner Collection



Stephen Willats (\*1943)  
*Ein Spaziergang in Marzahn. Berlin* [A Walk in Marzahn. Berlin]  
June 1992 – January 1993  
11 panels, photographs, photo dyes and acrylic paint on cardboard  
59 x 41 cm  
From the Stephen Willats Archive



Ruth Wolf-Rehfeldt (1932–2024)  
*Kuben, Kästen, Käfige* [Cubes, Boxes, Cages]  
1979  
Typewriting and carbon copies on paper, three parts  
each 29,5 x 21 cm  
The Estate of Ruth Wolf-Rehfeldt



Ruth Wolf-Rehfeldt (1932–2024)  
*Untitled (Concrete Architecture)*  
1978  
Carbon copy of typewriting on paper  
21 x 29,7 cm  
The Estate of Ruth Wolf-Rehfeldt



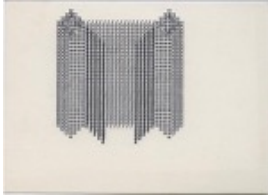
Ruth Wolf-Rehfeldt (1932–2024)  
*Concrete Architecture 'Dead End'*  
1975  
Carbon copy of original typewriting  
14,7 x 21 cm  
The Estate of Ruth Wolf-Rehfeldt

# DAS MINSK

## KUNSTHAUS IN POTSDAM



Ruth Wolf-Rehfeldt (1932–2024)  
*Concrete Architecture 'Dead End'*  
1975  
Carbon copy of original typewriting  
14,7 x 21 cm  
The estate of Ruth Wolf-Rehfeldt



Ruth Wolf-Rehfeldt (1932–2024)  
*Hausbau [House Construction]*  
n. d.  
Typewriter font on paper  
10,5 x 15 cm  
The estate of Ruth Wolf-Rehfeldt